

PLAN LEGEND

WATER PROPOSED



RIGHT OF WAY



CENTERLINE



ENCASEMENT



GATE VALVE



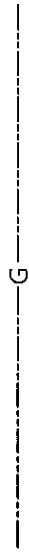
SERVICE LATERAL



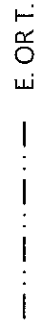
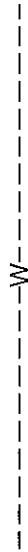
EXISTING SEWER



EXISTING GAS LINE



EXISTING WATER LINE



ELECTRICAL AND TELEPHONE CONDUIT EXISTING



POWER POLE AND GUY LINE



TRAFFIC SIGNAL EXISTING



WATER WELL - PROVIDE DISTANCE TO SEWERS



FIRE HYDRANT




BLOW - OFF

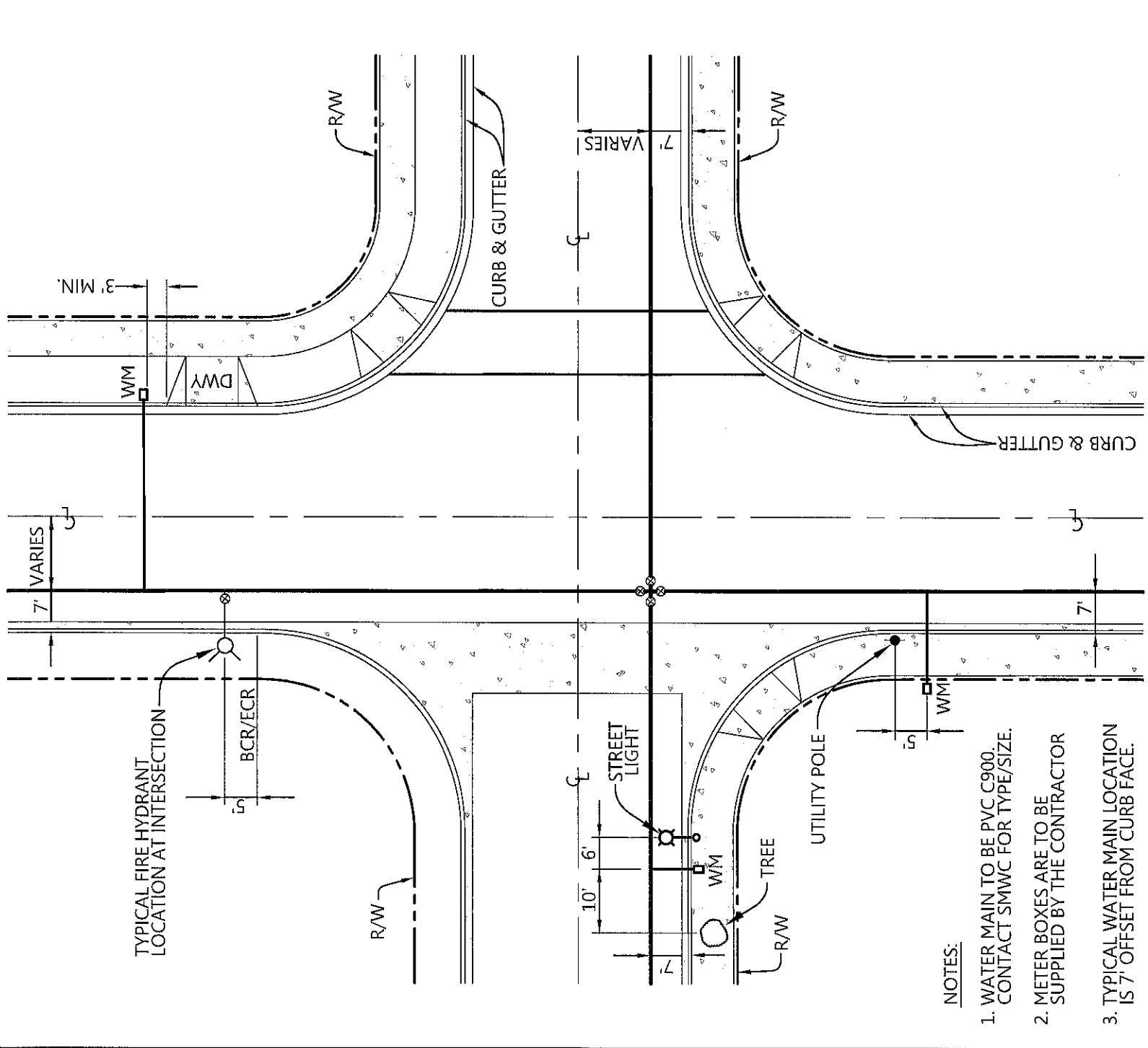


AIR & VACUUM VALVE ASSEMBLY (SIZE PER PLAN)

SOUTH MESA WATER COMPANY

LEGEND OF SYMBOLS

APPROVED		REVISION	DATE	W-1
GENERAL MANAGER	DATE			
BOARD MEMBER	DATE			SHEET 1 OF 1



NOTES:

1. WATER MAIN TO BE PVC C900. CONTACT SMMC FOR TYPE/SIZE.
2. METER BOXES ARE TO BE SUPPLIED BY THE CONTRACTOR
3. TYPICAL WATER MAIN LOCATION IS 7' OFFSET FROM CURB FACE.

SOUTH MESA WATER COMPANY
TYPICAL WATER FACILITIES LOCATION - HORIZONTAL VIEW

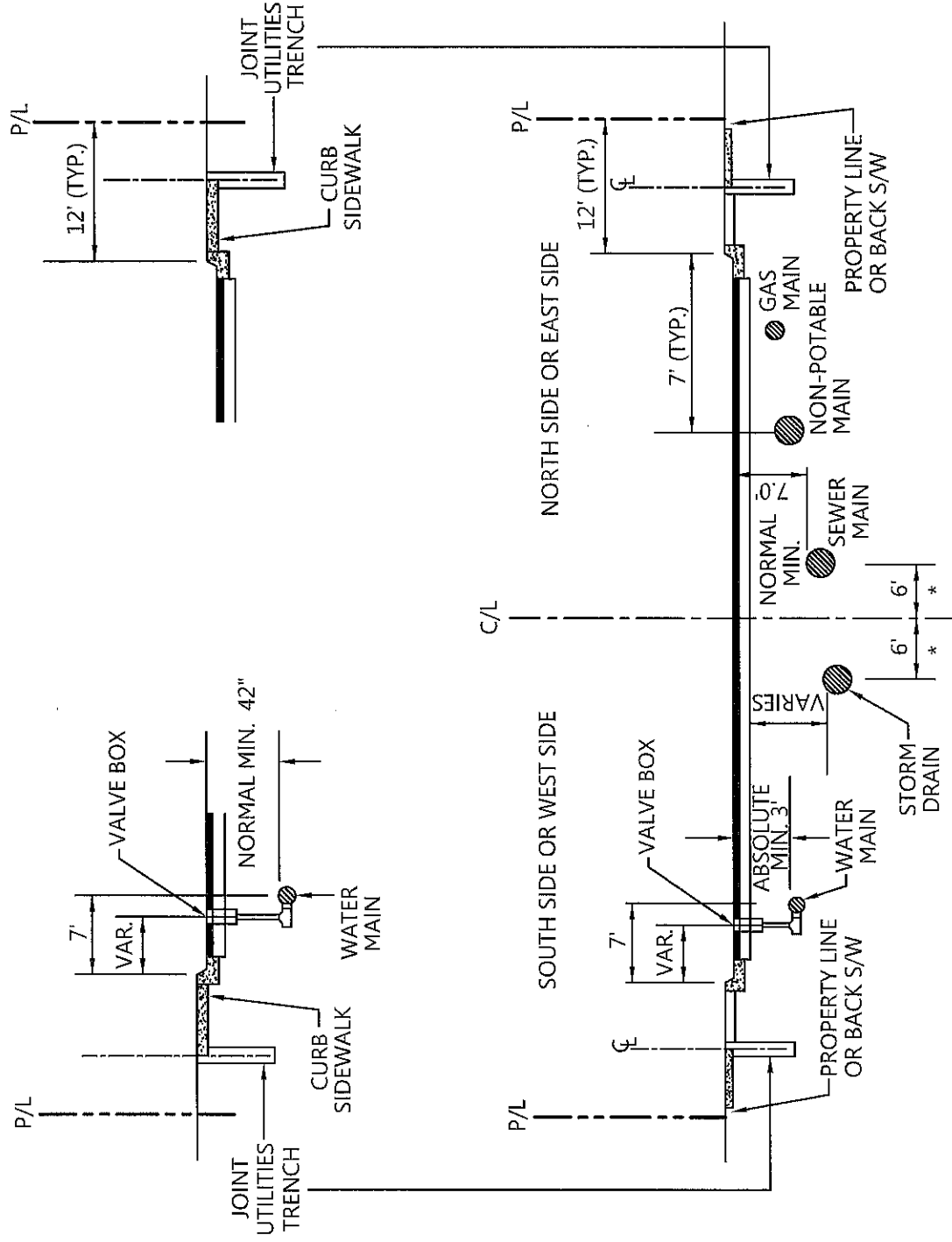


APPROVED

GENERAL MANAGER _____ DATE _____
 BOARD MEMBER _____ DATE _____

REVISION	DATE
NOTE 2	11/15

W-2

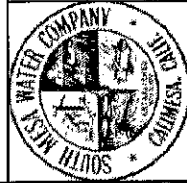


* EXCEPT IN DIVIDED ROADWAYS

NOTES:

1. LOCATION AND DEPTH OF EXISTING AND PROPOSED UTILITIES MUST BE PROVIDED BY THE DEVELOPER AND SHOWN ON PLANS SUBMITTED TO THE WATER COMPANY FOR APPROVAL.
2. FOR COMMERCIAL DEVELOPMENTS, THE FIRE HYDRANT SHALL BE PLACED WITHIN THE SIDEWALK A MINIMUM OF 2 FEET TO THE CENTERLINE OF BARREL BEHIND FACE OF CURB.
3. ANY CHANGES IN THE STANDARD LOCATION OF PROPOSED WATER FACILITIES SHALL BE PRE-APPROVED BY THE WATER COMPANY PRIOR TO CONSTRUCTION.
4. ANY CONFLICTS BETWEEN UTILITY COMPANIES FACILITIES, EXISTING AND PROPOSED, MUST BE RESOLVED BY THE UTILITY COMPANIES.

SOUTH MESA WATER COMPANY
TYPICAL UTILITY LOCATION - PROFILE VIEW



APPROVED

GENERAL MANAGER

BOARD MEMBER

REVISION

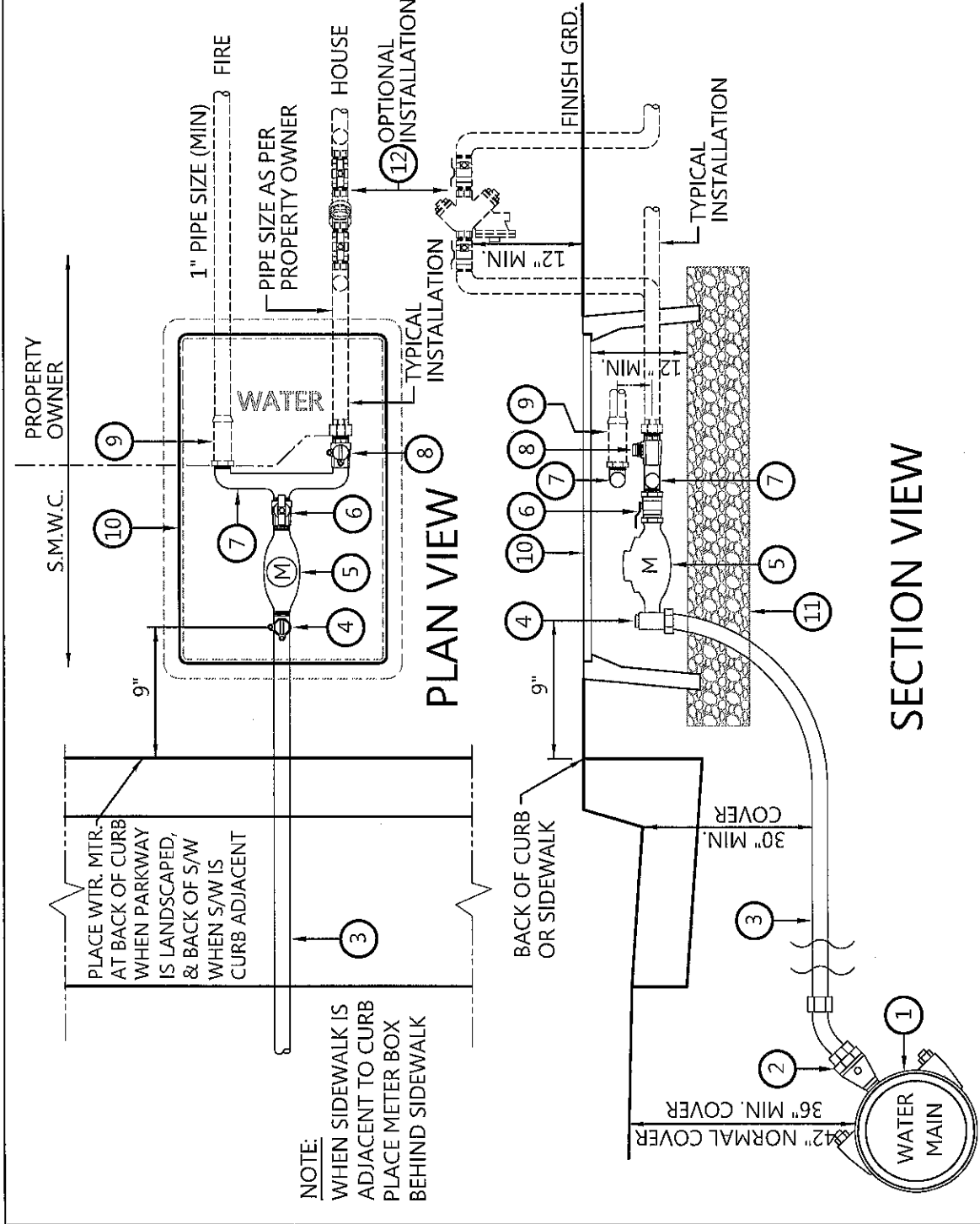
DATE

DATE

DATE

W-3

SHEET 1 OF 1




WATER SERVICE NOTES & MATERIALS

- 1 WATER MAIN PER S.M.W.C.
- 2 CORPORATION STOP
- 3 1-1/4" (COPPER TUBE SIZE) MUNICIPEX (PEXa) SDR-9 TUBING (AWWA C-904 COMPLIANT), & PLACE #14 GA. COATED TRACER WIRE. NOTE: ALL EXISTING SERVICES REQUIRING EXTENSION OR REPLACEMENT SHALL BE INSTALLED FROM THE MAIN TO THE METER.
- 4 1" ANGLE METER VALVE - TYPE PER S.M.W.C.
- 5 1" WATER METER - TYPE PER S.M.W.C.
- 6 1" LOCK WING BALL METER VALVE PER S.M.W.C. MODEL 708UMM - 1" x 1" x 7.5" A.Y. MCDONALD U-BRANCH ASSEMBLY OR EQUAL
- 7
- 8 1" CURB STOP - TYPE A.Y. MCDONALD MODEL 75107W-1 BALL VALVE OR EQUAL
- 9 OWNER SUPPLIED 1" ZURN/WILKINS MODEL 700XL OR EQUAL DUAL CHECK VALVE ASSEMBLY
- 10 METER BOX - J&R CONCRETE PRODUCTS MODEL P-W6B SPECIAL SERIES CONC. METER (22"Wx34"Lx12"D) BOX W/2-PC POLYMER CONCRETE COVER & LID (CONTRACTOR SUPPLIED)
- 11 PLACE MINIMUM 6" THICK LAYER OF 3/4" CRUSHED ROCK BASE AND EMBED METER BOX INTO ROCK.
- 12 OPTIONAL INSTALLATION: KEEPING OF LARGE ANIMALS REQUIRES THE INSTALLATION OF AN APPROVED ABOVE GROUND, REDUCED PRESSURE BACKFLOW ASSEMBLY. CONTACT S.M.W.C. FOR DETAILS.

SOUTH MESA WATER COMPANY

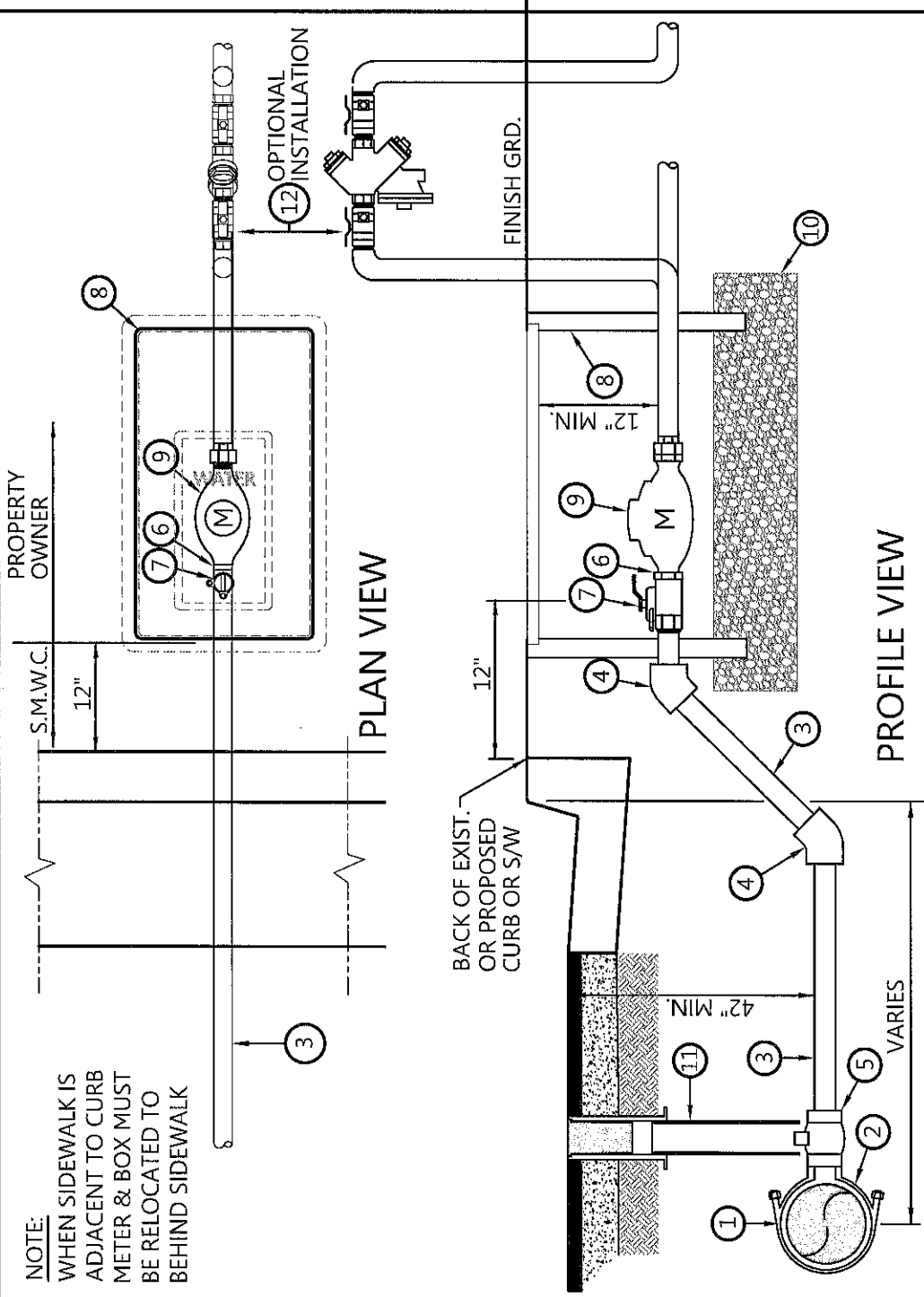
RESIDENTIAL 1" COMBINATION WATER & FIRE SERVICE CONNECTION

	APPROVED	REVISION	DATE
	GENERAL MANAGER	NOTE 10	11/15
	BOARD MEMBER	NOTE 3 & 10	3/18
			DATE
			DATE
			SHEET 1 OF 1

W-4A

NOTE:

WHEN SIDEWALK IS ADJACENT TO CURB METER & BOX MUST BE RELOCATED TO BEHIND SIDEWALK



CONSTRUCTION NOTES:

- ① MAIN CONNECTION PER S.M.W.C.
- ② GALVANIZED THREADED TAPPING SADDLE (SIZE PER METER)
- ③ GALVANIZED STEEL PIPE
- ④ THREADED 45° BEND
- ⑤ CORP STOP (SIZE PER METER)

NOTES:

- 1. EXACT LOCATIONS SHALL BE DETERMINED IN THE FIELD BY DEVELOPER.
- 2. SERVICE SIZE SHALL BE DESIGNATED ON PLAN.
- 3. NO METER SHALL BE INSTALLED CLOSER THAN 3' FROM DRIVEWAY APRONS.
- ⑥ METER FLANGE
- ⑦ LOCKING BALL VALVE
- ⑧ 16"x 24" CONCRETE METER BOX
- ⑨ METER (TYPE PER SMWC)
- ⑩ PLACE MINIMUM 6" THICK LAYER OF 3/4" CRUSHED ROCK BASE AND EMBED METER BOX INTO ROCK.
- 4. ALL STEEL THREADS TO BE COATED WITH BITUMASTIC BEFORE BACKFILLING.
- 5. INSTALLATION SHALL BE TESTED TO ASSURE NO LEAKS.
- 6. USE COMPOUND METER ON DOMESTIC OR COMMERCIAL SERV.
- ⑪ VALVE CAN, & LID PER S.M.W.C. STD. DWG W-11
- ⑫ OPTIONAL INSTALLATION: KEEPING OF LARGE ANIMALS REQUIRES INSTALLATION OF AN APPROVED ABOVE GROUND, REDUCED PRESSURE BACKFLOW ASSEMBLY. CONTACT S.M.W.C. FOR DETAILS.
- 7. USE TURBINE METER FOR IRRIGATION

SOUTH MESA WATER COMPANY
1.5" TO 2" WATER SERVICE INSTALLATION



APPROVED

GENERAL MANAGER

BOARD MEMBER

REVISION	DATE

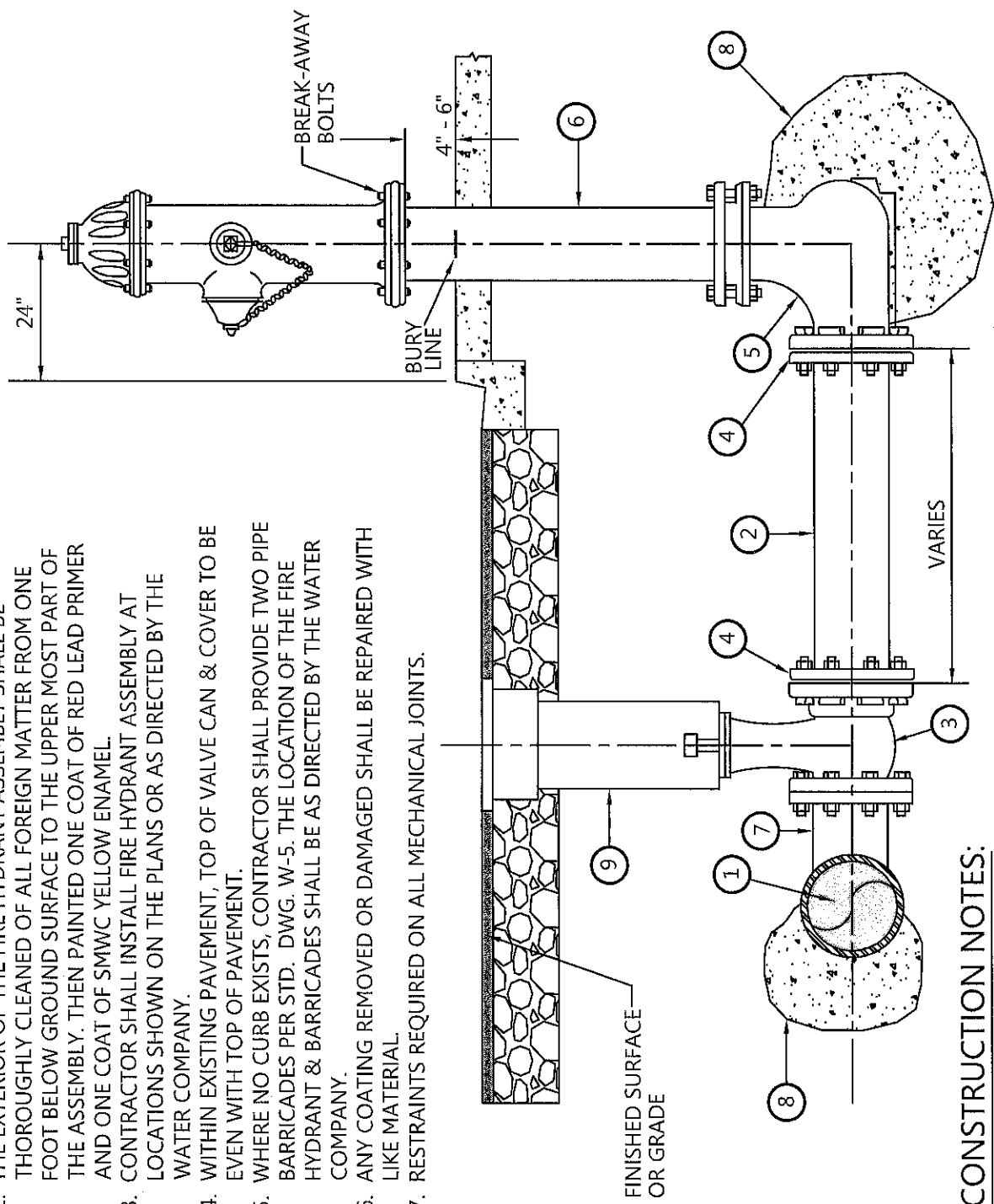
W-5

SHEET 1 OF 1

NOTES:

**MUELLER SUPER CENTURIAN 250
MODEL 423, 5-1/4" MAIN
VALVE, 6" MJ SHOE INLET**

1. SLOPE OF LATERAL MAY VARY FROM GATE VALVE TO FIRE HYDRANT RISER TO PROVIDE A PLUMB RISER AND THE REQUIRED ELEVATIONS AND DISTANCES.
2. THE EXTERIOR OF THE FIRE HYDRANT ASSEMBLY SHALL BE THOROUGHLY CLEANED OF ALL FOREIGN MATTER FROM ONE FOOT BELOW GROUND SURFACE TO THE UPPER MOST PART OF THE ASSEMBLY. THEN PAINTED ONE COAT OF RED LEAD PRIMER AND ONE COAT OF S.M.W.C. YELLOW ENAMEL.
3. CONTRACTOR SHALL INSTALL FIRE HYDRANT ASSEMBLY AT LOCATIONS SHOWN ON THE PLANS OR AS DIRECTED BY THE WATER COMPANY.
4. WITHIN EXISTING PAVEMENT, TOP OF VALVE CAN & COVER TO BE EVEN WITH TOP OF PAVEMENT.
5. WHERE NO CURB EXISTS, CONTRACTOR SHALL PROVIDE TWO PIPE BARRICADES PER STD. DWG. W-5. THE LOCATION OF THE FIRE HYDRANT & BARRICADES SHALL BE AS DIRECTED BY THE WATER COMPANY.
6. ANY COATING REMOVED OR DAMAGED SHALL BE REPAIRED WITH LIKE MATERIAL.
7. RESTRAINTS REQUIRED ON ALL MECHANICAL JOINTS.

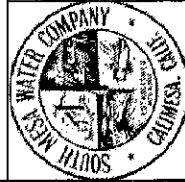


CONSTRUCTION NOTES:

- ① WATER MAIN
- ② 6" PVC C900 DR14 PIPE
- ③ 6" GATE VALVE
- ④ 6" RESTRAINT
- ⑤ 6" M.J. SHOE INLET
- ⑥ FIRE HYDRANT ASSEMBLY (WEEP HOLES PLUGGED)
- ⑦ MAIN CONNECTION PER S.M.W.C. STD.S
- ⑧ THRUST BLOCK PER S.M.W.C. STD DWG'S.
- ⑨ ADJUSTABLE VALVE CAN & LID PER S.W.W.C. STD. DWG. W-11

SOUTH MESA WATER COMPANY

DRY BARREL FIRE HYDRANT ASSEMBLY



APPROVED

GENERAL MANAGER

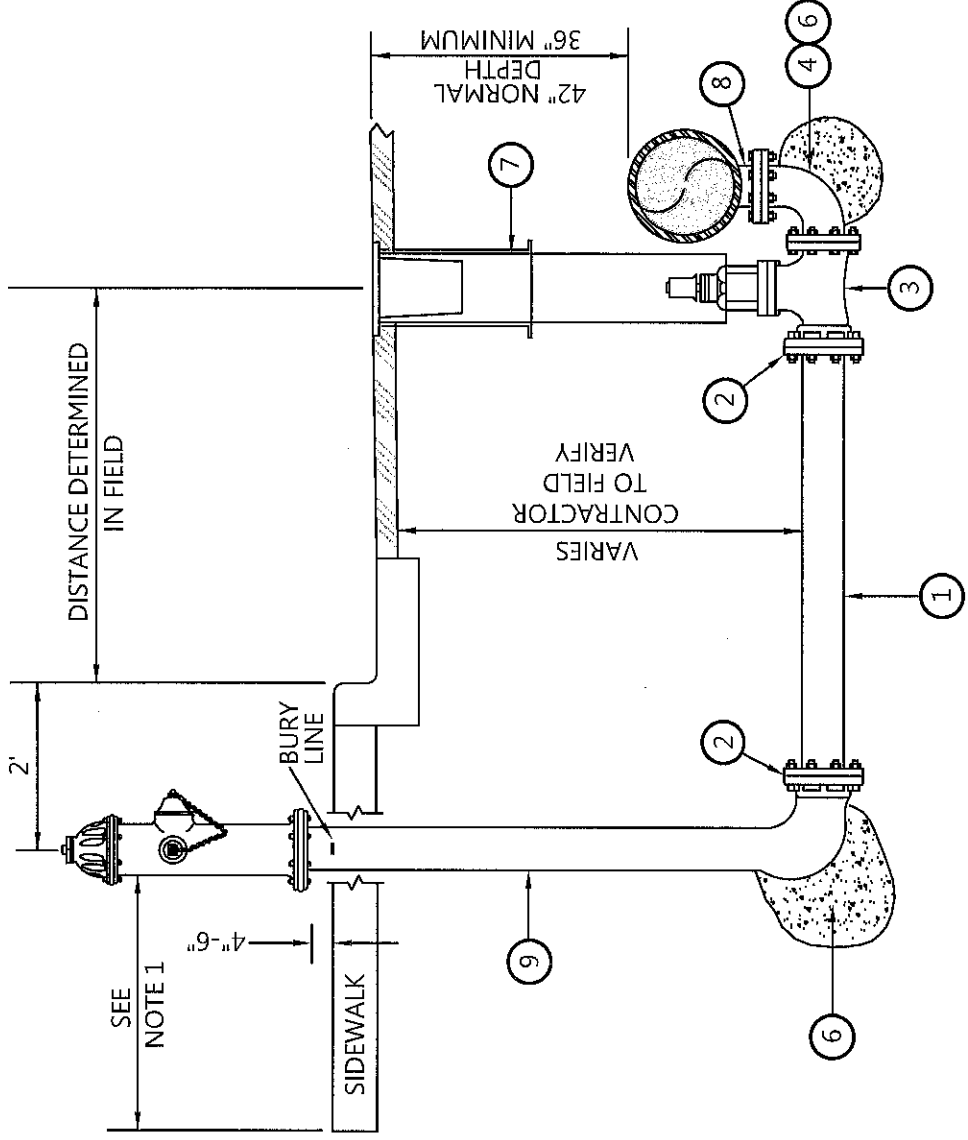
BOARD MEMBER

REVISION
NOTE 5,9 & DWG

DATE
1/16

W-6

SHEET 1 OF 1



CONSTRUCTION NOTES:

- 1 6" PVC C900 DR 14 PIPE
- 2 6" RESTRAINT (MEGALUG OR EQUAL)
- 3 6" GATE VALVE
- 4 6" x 90° BEND
- 5 6" ADAPTER
- 6 THRUST BLOCK, PER S.M.W.C. STD. DWG. W-16.
- 7 VALVE CAN AND COVER PER S.M.W.C. STD. DWG. W-11.
- 8 TEE, WATER MAIN SIZE x 6" CONNECTION
- 9 FIRE HYDRANT ASSEMBLY, PER S.M.W.C. STANDARD DWG. W-6.

NOTES:

- 1. IF 4'-0" CLEAR IS NOT POSSIBLE, PLACE BLOW OFF 2'-0" BEHIND SIDEWALK IN PARKWAY. INSTALL 18" SQ. x 6" CONC. COLLAR AT GRADE IF BLOW OFF IS NOT INSTALLED IN SIDEWALK.
- 2. THE CONTRACTOR SHALL INSTALL 2 BOLLARDS ON THE STREET SIDE OF THE BLOW OFF AT 4' O/C IF INSTALLED IN UNIMPROVED AREAS.
- 3. THIS STANDARD TO BE USED UNLESS SPECIFIED PIPE LOCATION IS DEEPER THAN 42".
- 4. TO BE USED AT DEAD ENDS AND LOW POINTS AND IDENTIFIED AS A FLUSHING POINT ON THE DRAWINGS.

SOUTH MESA WATER COMPANY

6" BLOW-OFF FOR MAINS 12" - 16" W/DRY BARREL



APPROVED

GENERAL MANAGER

BOARD MEMBER

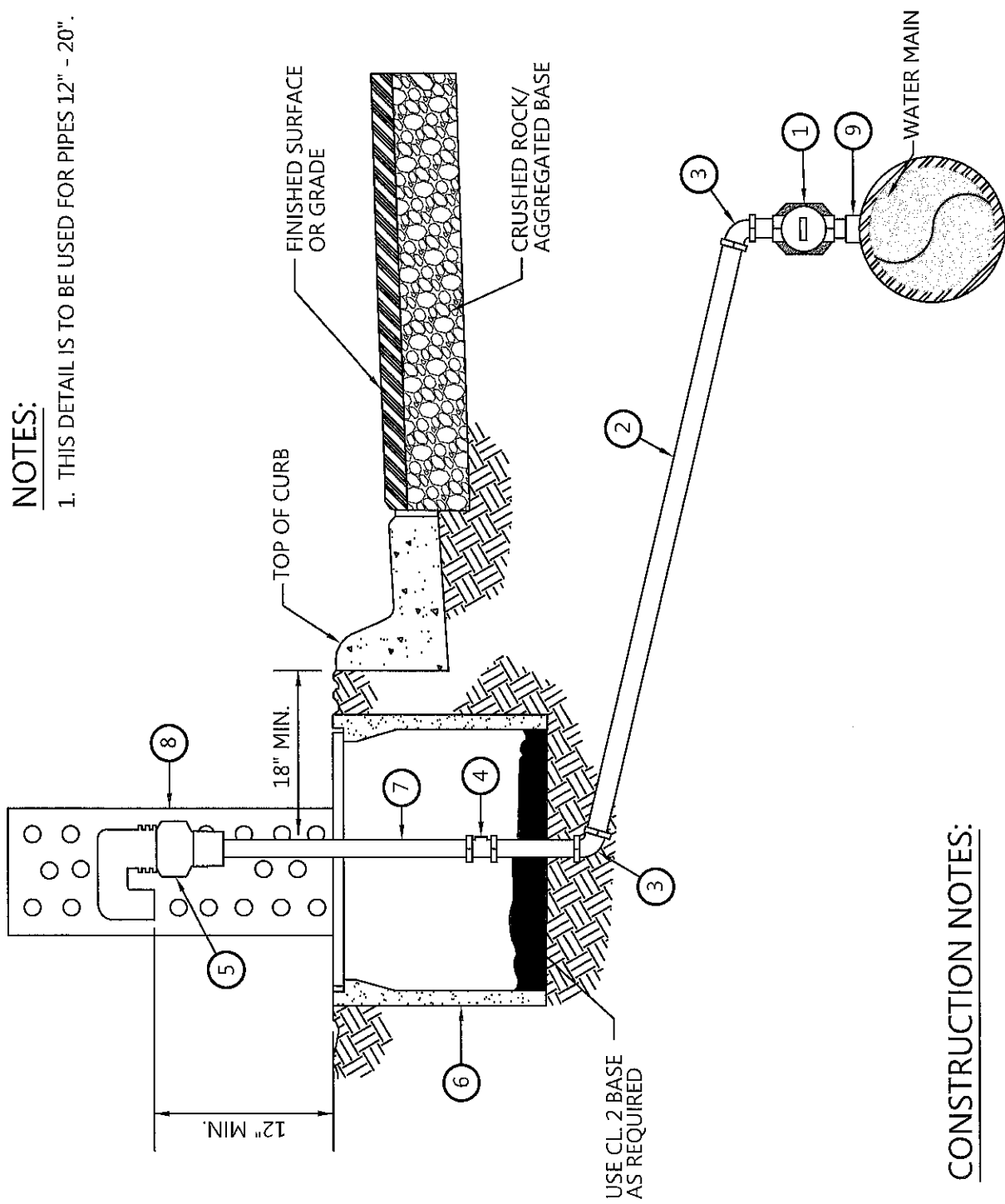
REVISION	DATE
NOTES 7,8 & DWG	1/16

W-7B

SHEET 1 OF 1

NOTES:

1. THIS DETAIL IS TO BE USED FOR PIPES 12" - 20".

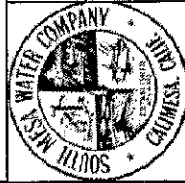


CONSTRUCTION NOTES:

- ① CORP. STOP, BRASS
- ② THREADED 2" GALVANIZED PIPE
- ③ 45° GAL. BEND, THREADED
- ④ CURB STOP (IRON TO IRON)
- ⑤ COMBINATION AIR & VAC. ASSEMBLY (ARI MODEL)
- ⑥ 5 1/2" METER BOX OR #65, 2 EACH
- ⑦ GALVANIZED IRON PIPE
- ⑧ LID AND VENT PIPE
- ⑨ SERVICE CLAMP PER S.M.W.C.

SOUTH MESA WATER COMPANY

2" COMBINATION AIR AND VACUUM VALVE ASSEMBLY



APPROVED

GENERAL MANAGER

BOARD MEMBER

REVISION

DATE

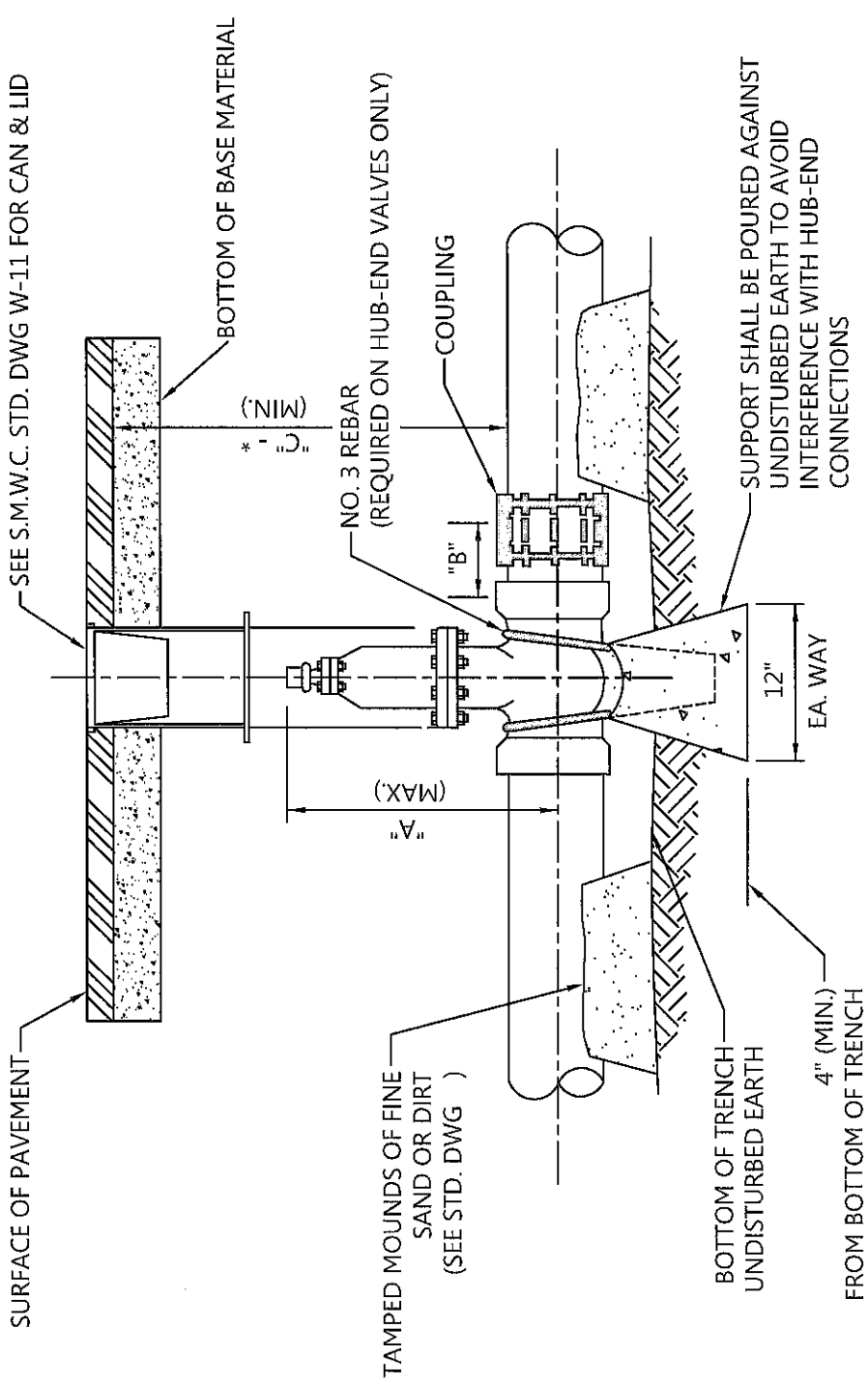
DATE

DATE

W-8B

SHEET 1 OF 1

P.V.C. & D.I.P. PIPELINE INSTALLATION FOR PIPES 4" TO 12" DIAMETER



NOTES:


1. ALL FLEXIBLE JOINTS IN PIPELINES UPSTREAM FROM VALVES OR IN BRANCH LINE SHALL BE WELDED OR RESTRAINED IN ACCORDANCE WITH THE SPECIFICATIONS AND CONTRACT DRAWINGS TO PROVIDE ANCHORAGE FOR UNBALANCED FORCES.
2. ALL STEEL FLANGES SHALL BE COATED IN FIELD WITH AN APPROVED COATING PER S.M.W.C. SPECIFICATIONS.
3. ALL STEEL PIPE AND FITTINGS SHALL BE COATED WITH THE SAME MATERIAL AS SUPPLIED ON THE PIPE.

* - FROM TOP OF F.S., NORMAL COVER IS 42", MINIMUM 36"

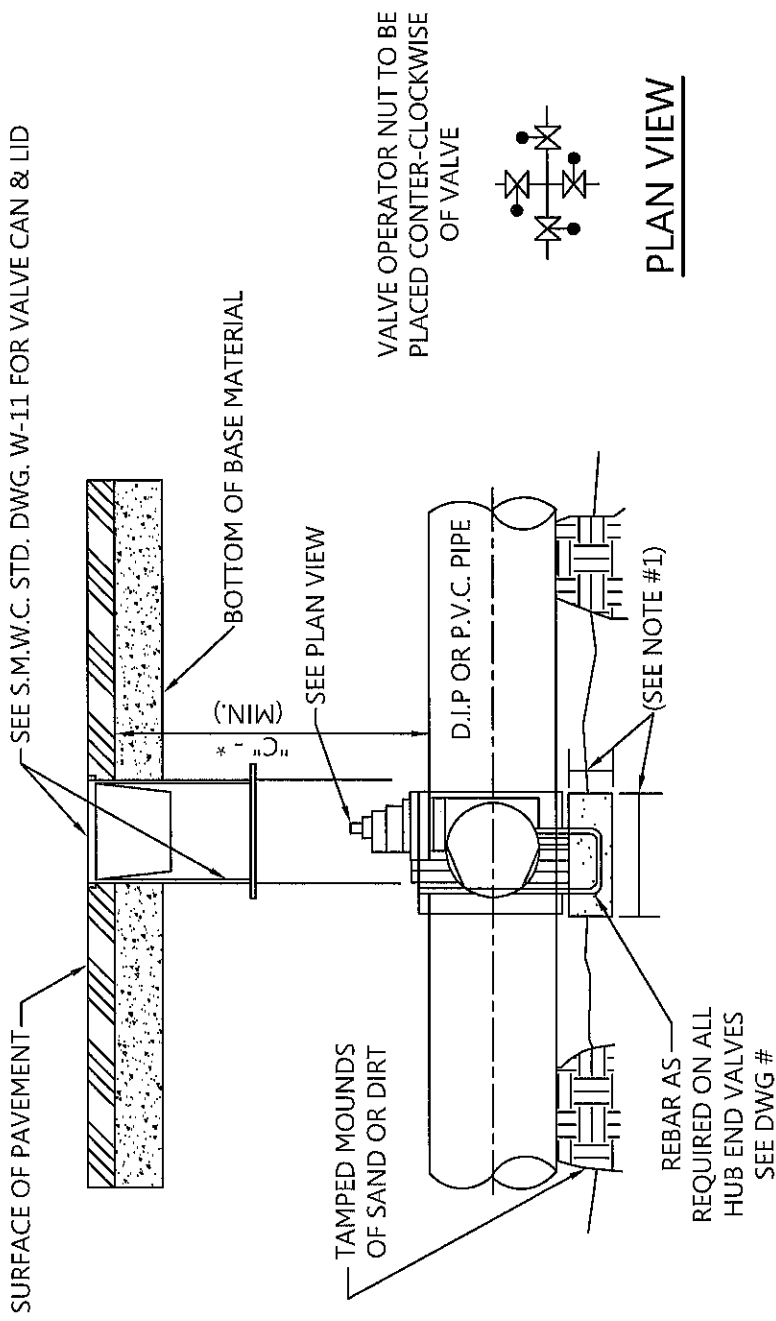
GATE VALVE SIZE	TABULATED DIMENSIONS		
	VALVE HEIGHT "A"	COUPLING NIPPLE "B"	ABS. MIN. COVER "C"
4"	19"	1'-6"	1'-7"
6"	23"	1'-6"	1'-9"
8"	28"	1'-6"	2'-0"
10"	31"	1'-6"	2'-4"
12"	36"	2'-0"	2'-8"

SOUTH MESA WATER COMPANY

VALVE INSTALLATION - RESILIENT WEDGE GATE VALVES FOR MAINS 4"-12"

	APPROVED	REVISION	DATE
	GENERAL MANAGER	VALVE CAN	1/16
	BOARD MEMBER		
	DATE		
	DATE		SHEET 1 OF 1

P.V.C. OR D.I.P. PIPELINE INSTALLATION



NOTES:

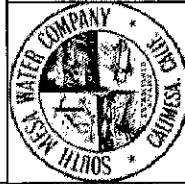
1. ALL FLEXIBLE JOINTS IN PIPELINES FROM VALVES OR IN BRANCH LINES SHALL BE WELDED OR RESTRAINED TO PROVIDE ANCHORAGE FOR UNBALANCED FORCES.
2. CONCRETE SUPPORTS TO AVOID INTERFERENCE WITH BOLTED OR HUB END CONNECTIONS SHALL BE POURED AGAINST UNDISTURBED EARTH.
3. ALL STEEL FLANGES SHALL BE PRIMED AND COATED PER S.M.W.C. SPECIFICATIONS.
4. ALL STEEL PIPE AND FITTINGS SHALL BE COATED WITH THE SAME MATERIAL AS SUPPLIED ON THE PIPE.

* - FROM TOP OF F.S., NORMAL COVER IS 42". MINIMUM 36"

VALVE SIZE	TABULATED DIMENSIONS		
	VALVE HEIGHT "A"	COUPLING NIPPLE "B"	ABS. MIN. COVER "C"
4"	19"	1'-6"	1'-7"
6"	23"	1'-6"	1'-9"
8"	28"	1'-6"	2'-0"
10"	31"	1'-6"	2'-4"
12"	36"	2'-0"	2'-8"

SOUTH MESA WATER COMPANY

VALVE INSTALLATION - BUTTERFLY VALVES - MAINS 12 - 20"



APPROVED

GENERAL MANAGER

BOARD MEMBER

DATE

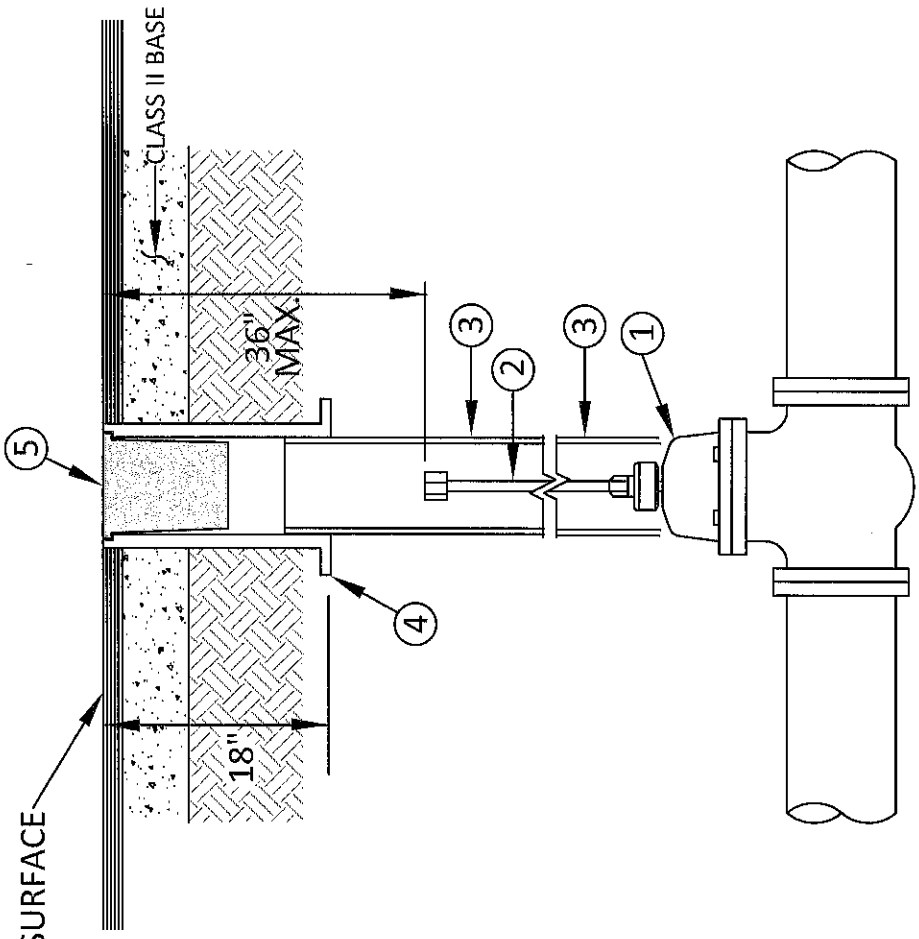
DATE

REVISION
VALVE CAN

DATE
1/16

W-10

SHEET 1 OF 1



VALVE CAN & LID

KEY NOTES:

1. VALVE TYPE AND VALVE ENDS SHALL BE AS INDICATED ON THE PLANS.
2. ALL BURIED VALVES 5' AND DEEPER SHALL BE PROVIDED WITH SOLID STEEL EXTENSION STEM OPERATOR WITH 2" SQUARE AWWA NUT WITHIN 36" OF VALVE BOX COVER. NUT IS TO INDICATE DIRECTION OF ROTATION TO OPEN VALVE.
3. 8" DIA. SDR-35, CUT TO LENGTH WITHIN 6" OF FINAL GRADE.
4. 8" DIA. x 18" SLIP CAN (GALVENIZED)
5. 8" STEEL LID AT GRADE, PAINTED SAFETY BLUE (2 COATS) TOP OF CAN STAMPED "WATER".

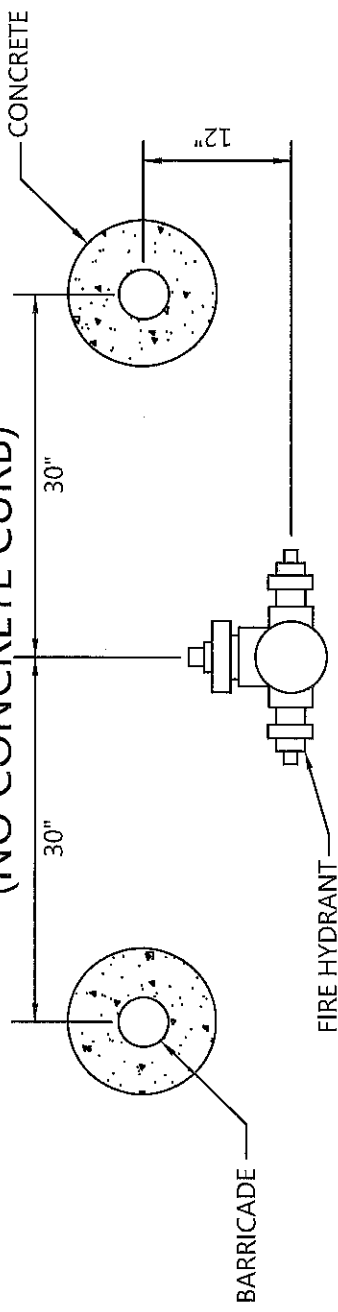
SOUTH MESA WATER COMPANY

VALVE CAN INSTALLATION

APPROVED		REVISION	DATE
		NOTES 1, 3-5	1/16
GENERAL MANAGER	DATE	W-11	
BOARD MEMBER	DATE	SHEET 1 OF 1	

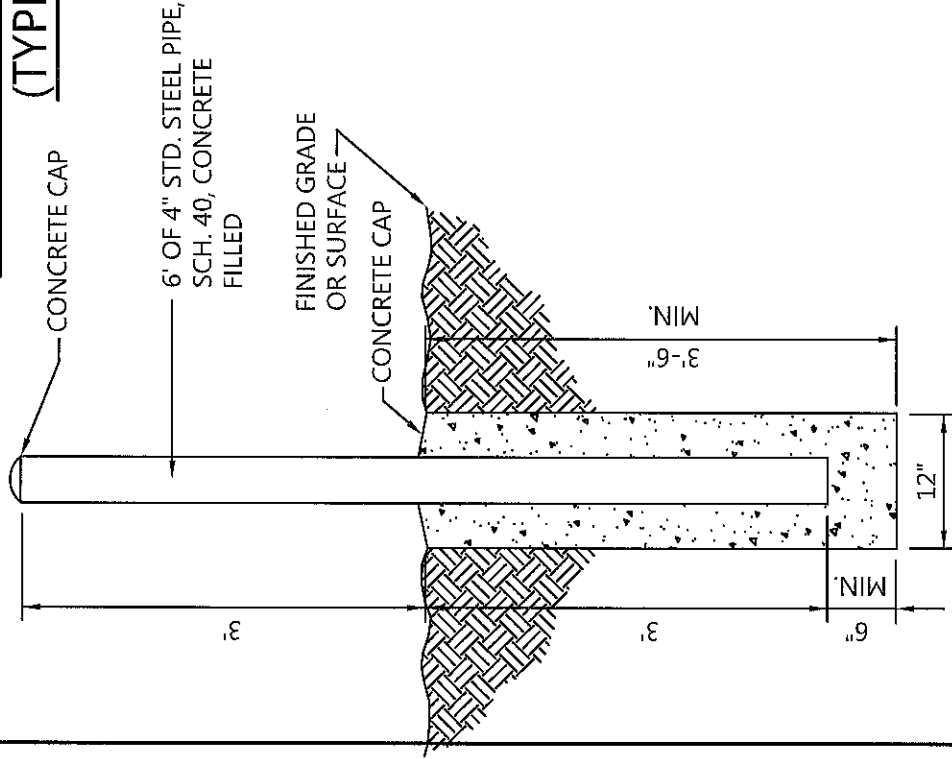
STREET

(NO CONCRETE CURB)



PLAN

HYDRANT/B.O./A.V.
ASSEMBLY BARRICADES
(TYPICAL)



ELEVATION

NOTES:

1. SEE PLANS FOR NUMBER OF BARRICADES TO BE USED.
2. THE EXACT LOCATION OF BARRICADES MAY BE CHANGED BY THE GENERAL MANAGER, IN THE FIELD.
3. THE STEEL PIPE ABOVE GROUND SHALL BE PAINTED A MINIMUM OF TWO FIELD COATS OF APPROVED PRIMER.
4. TWO FINISH COATS OF WATER COMPANY STANDARD YELLOW SHALL BE USED FOR BARRICADES.
5. BARRICADES FOR BLOW-OFFS, AIR RELEASE VALVES & VAULT VENTS SHALL BE GIVEN TWO FINISH COATS OF YELLOW PAINT.

SOUTH MESA WATER COMPANY

PIPE BARRICADE



APPROVED

GENERAL MANAGER

BOARD MEMBER

REVISION

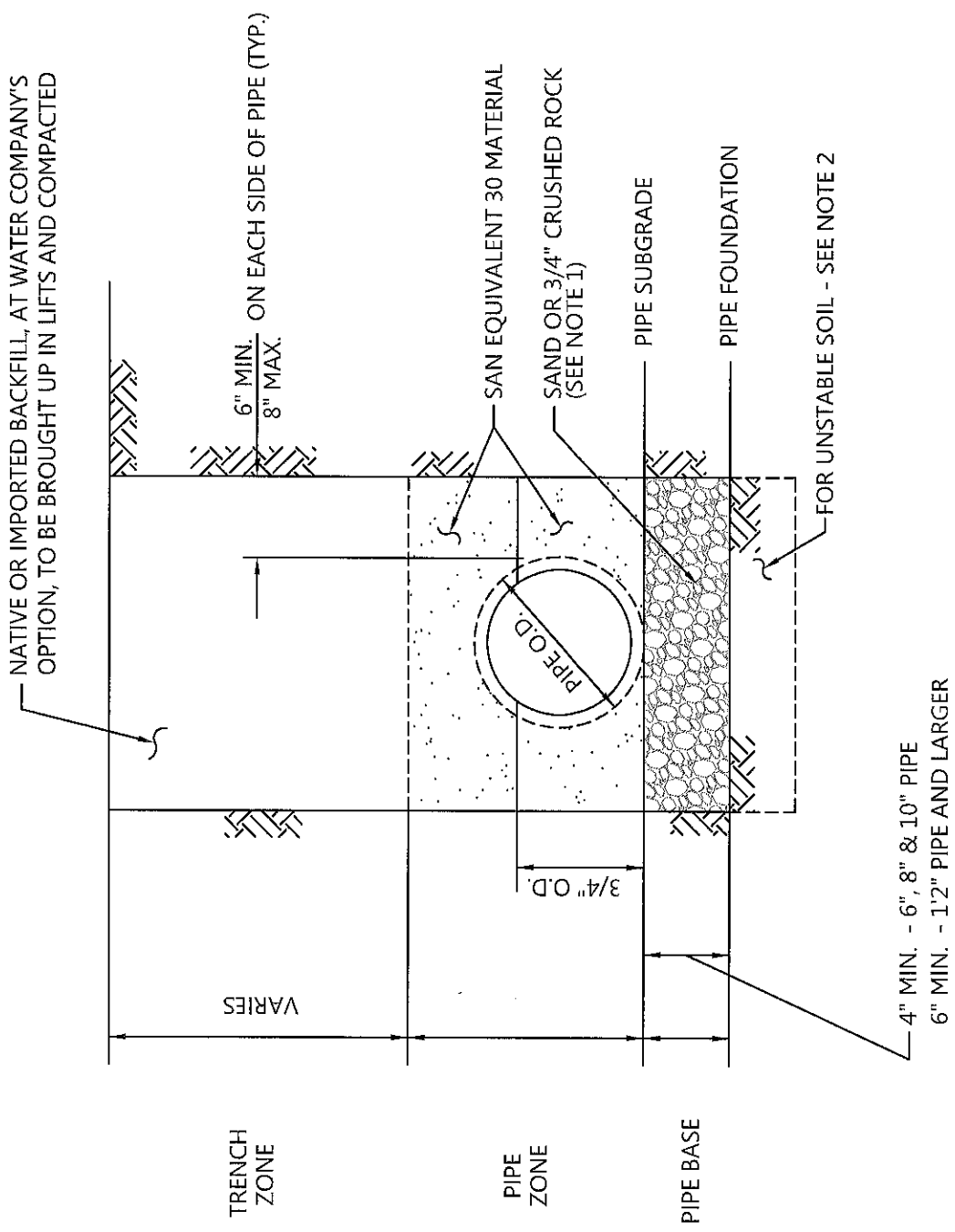
DATE

DATE

DATE

W-12

SHEET 1 OF 1



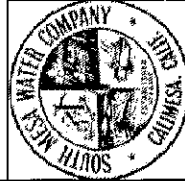
NORMAL BEDDING

NOTES:

1. CONCRETE ENCASMENT PER SMWC STD.S SHALL BE USED WHERE THE TRENCH WIDTH AT THE UPPER LIMIT OF THE PIPE ZONE EXCEEDS THE MAX. WIDTH SPECIFIED ABOVE.
2. IF UNSTABLE SOIL IS ENCOUNTERED, A WATER COMPANY REPRESENTATIVE SHALL DETERMINE DEPTH OF REMOVAL AND SIZE OR TYPE OF FOUNDATION FILL MATERIAL.

SOUTH MESA WATER COMPANY

PIPE BEDDING DETAIL



APPROVED

GENERAL MANAGER

BOARD MEMBER

REVISION

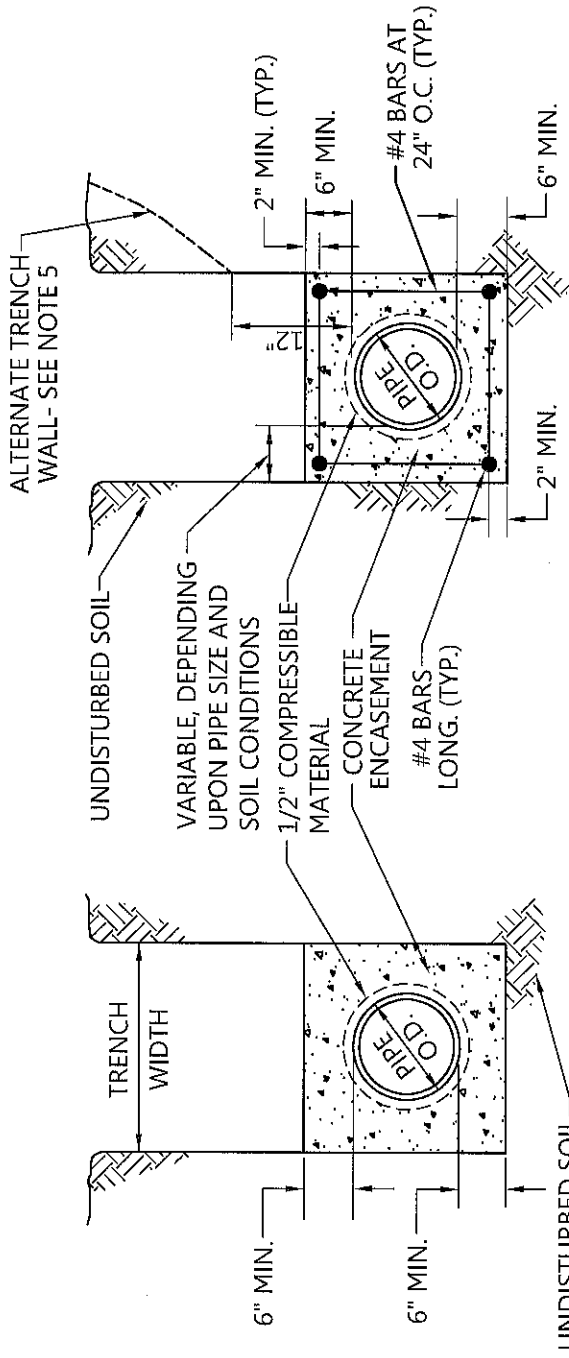
DATE

DATE

DATE

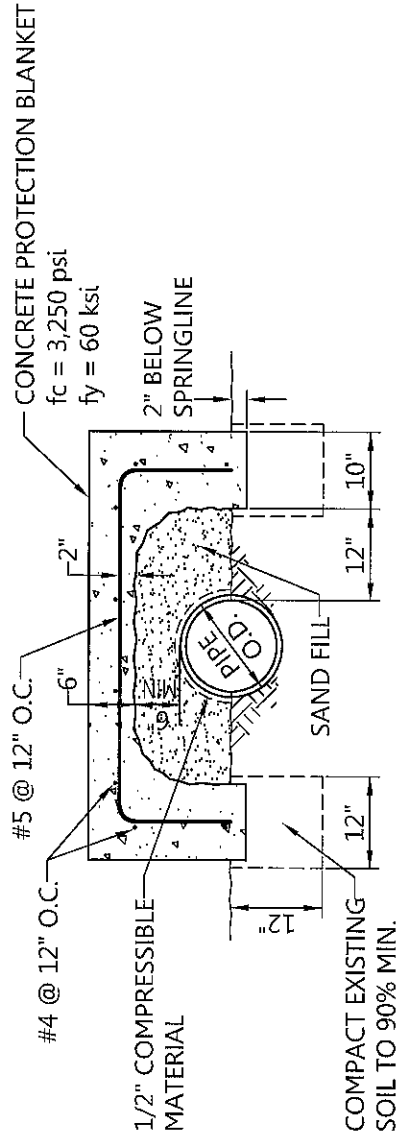
W-14

SHEET 1 OF 1



TYPE "A"

TYPE "B"



TYPE "C"

NOTES:

1. CONCRETE ENCASEMENT SHALL BE USED WHEN COVER IS LESS THAN 36" OR AS DETERMINED BY S.M.W.C..
2. ENCASEMENT TO BE PLACED AGAINST UNDISTURBED NATURAL GROUND OR FILL COMPACTED TO 90% RELATIVE DENSITY.
3. NO. 4 AND NO. 5 STEEL REINFORCING BARS SHALL BE USED AS SPECIFIED.
4. TYPE OF CONCRETE ENCASEMENT TO BE USED WILL BE SHOWN ON PLANS OR AS SPECIFIED BY S.M.W.C. FIELD REPRESENTATIVE TO MEET UNFORESEEN FIELD CONDITIONS. UNLESS NOTED OTHERWISE, ENCASEMENT SHALL BE CLASS "B" CONCRETE.
5. WHERE SLOPED TRENCHES ARE USED, WALLS WILL NOT BEGIN TO SLOPE CLOSER THAN 12" FROM THE TOP OF THE PIPE.

SOUTH MESA WATER COMPANY
CONCRETE ENCASUREMENT TYPE A, B & C



APPROVED

GENERAL MANAGER

BOARD MEMBER

REVISION

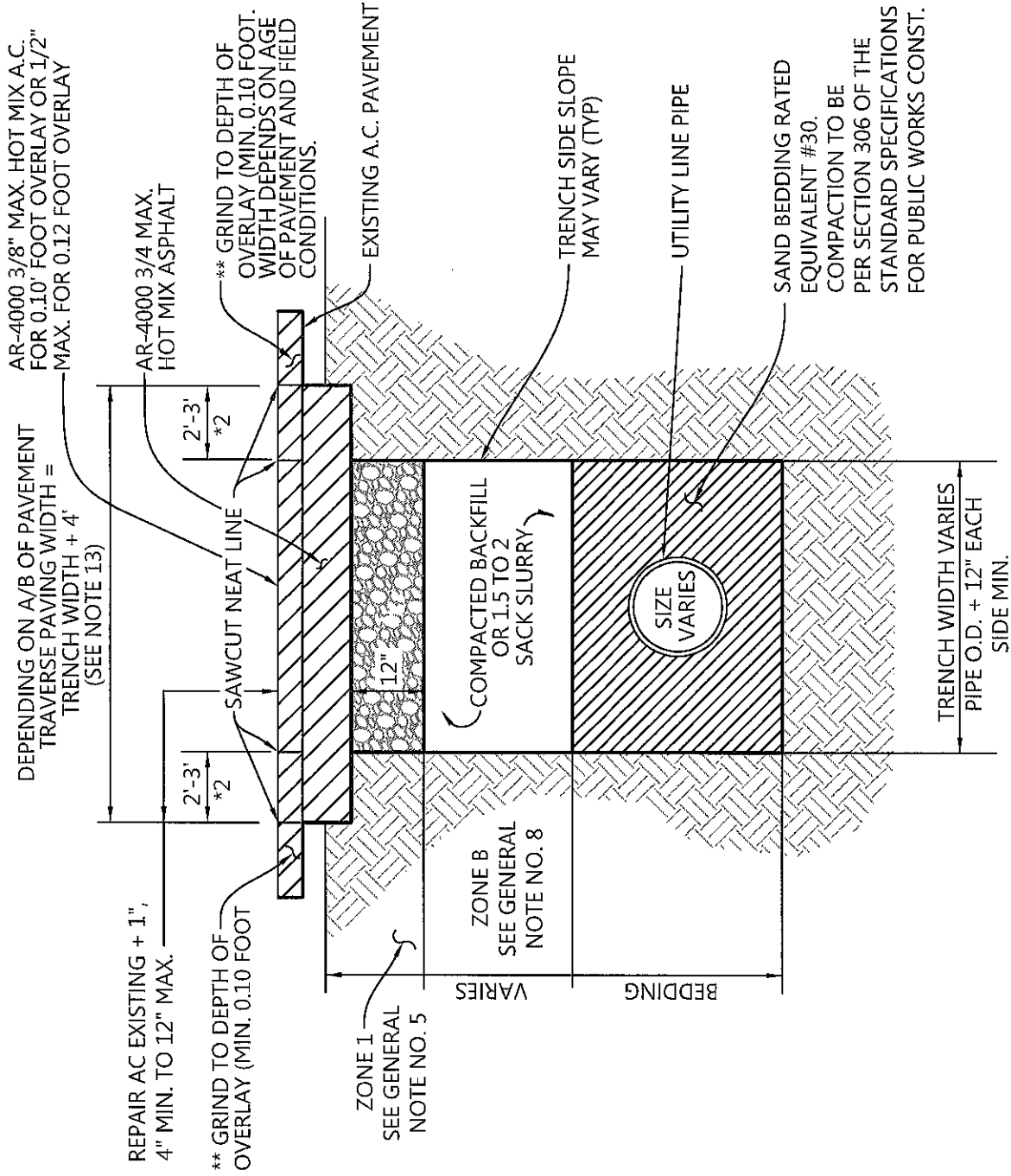
DATE

DATE

DATE

W-15

SHEET 1 OF 1



*1 NOTE 1 - ACTUAL TRENCH WIDTH TO BE AT ENGINEER'S DISCRETION.

SEE SHEETS 2 AND 3 FOR GENERAL NOTES


*2 FULL DEPTH A.C. + 1" REPAIR 2' ADJACENT TO LESS THAN OR EQUAL TO 42" DEPTH OF TRENCH.

FULL DEPTH A.C. +1" REPAIR 3' ADJACENT TO GREATER THAN 42" DEPTH OF TRENCH.

** NOTE 1 - ACTUAL GRINDING WIDTH TO BE DETERMINED BY AGE OF PAVEMENT AND LOCATION OF TRENCH TO VEHICLE WHEEL PATH.

SOUTH MESA WATER COMPANY

TRENCH REPAIR DETAIL

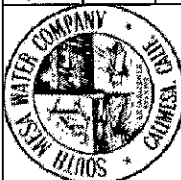
	APPROVED	REVISION	DATE	W-16
	GENERAL MANAGER			
	BOARD MEMBER			
	DATE			SHEET 1 OF 3

GENERAL NOTES:

1. ALL EXCAVATION WITHIN THE CITY RIGHT-OF-WAY REQUIRES AN EXCAVATION PERMIT FROM THE ENGINEERING DEPARTMENT.
2. UNDERGROUND SERVICE ALERT SHALL BE NOTIFIED 2 WORKING DAYS PRIOR TO START OF WORK 1-800-422-4133.
3. ALL EXCAVATIONS SHALL BE MADE, PROTECTED, AND SUPPORTED AS REQUIRED FOR SAFETY AND IN THE MANNER SET FORTH IN THE OPERATIONS RULES, ORDERS, AND REGULATIONS PRESCRIBED BY THE CALIFORNIA DIVISION OF INDUSTRIAL SAFETY.
4. COMPACTION AND BACKFILL SHALL BE VERIFIED BY A GEOTECHNICAL ENGINEER FOR THE CONTRACTOR AND APPROVED BY CITY ENGINEER PRIOR TO THE PLACING OF PERMANENT PAVEMENT.
5. A) BACKFILL ZONE 1 SHALL CONSIST OF CLASS II CRUSHED AGGREGATE BASE COMPACTED TO 95% OF RELATIVE COMPACTION, IN MAXIMUM LIFTS OF 6", AND CERTIFIED.
 B) BACKFILL IN ZONE 2 SHALL CONSIST OF CLASS II CRUSHED AGGREGATE BASE COMPACTED TO 90% OF RELATIVE COMPACTION, IN MAXIMUM LIFTS OF 12", AND CERTIFIED. IN SOME CASES NATIVE MATERIAL MAY BE ACCEPTABLE IF APPROVED BY THE CITY ENGINEER AND THE NATIVE MATERIAL MEETS "GREENBOOK" SPECIFICATIONS FOR TRENCH BACKFILL.
 C) BEDDING SHALL BE PER PLANS AND SPECIFICATIONS, AND SHALL ONLY EXTEND 12" ABOVE THE TOP OF THE PIPELINE OR CONDUIT.
 D) NO JETTING OR FLOODING OF BACKFILL MATERIAL WILL BE ALLOWED.
6. A MINIMUM 2-INCH THICKNESS OF TEMPORARY ASPHALT PAVING SHALL BE PLACED WITHIN THE TRENCH AREA IMMEDIATELY, UNTIL PERMANENT REPAIR IS COMPLETED. THE TEMPORARY PAVING SHALL BE PLACED AND COMPACTED IN SUCH A MANNER AS TO PROVIDE A SAFE AND SMOOTH TRAVELED SURFACE, FLUSH WITH THE SURROUNDING PAVEMENT. PERMITTEE SHALL MAINTAIN THE TEMPORARY PAVEMENT IN A SAFE AND SMOOTH CONDITION UNTIL PERMANENT PAVEMENT IS IN PLACE.
7. PRIOR TO PLACEMENT OF PERMANENT PAVING, EXISTING PAVEMENT SHALL BE GROUND TO THE APPROPRIATE HEADER CUT WIDTH. PAVEMENT CRACKED ADJACENT TO THE TRENCH SHALL BE REMOVED.
8. ALL EDGES OF EXISTING PAVEMENT BEING JOINED AND SURFACE BEING OVERLAID SHALL RECEIVE A TACK COAT OF ASPHALT EMULSION.
9. TRENCHES OF 300 FEET OR MORE SHALL BE PAVED WITH A SELF-PROPELLED PAVING MACHINE.
10. ANY STREET PAVED WITH ASPHALT CONCRETE IN THE PREVIOUS 60 MONTHS OR RESURFACED WITH AN ASPHALTIC EMULSION (SLURRY AND CAPE SEALS) IN THE PREVIOUS 36 MONTHS, WHERE THE TRENCH EXTENDS FROM THE CURB MORE THAN 5 FEET (INCLUDING SERVICE CONNECTIONS AND METER INSTALLATIONS) OR IS IN A TRAVELED LANE, WILL REQUIRE AN OVERLAY OR SLURRY SEAL 25 FEET IN BOTH DIRECTIONS FROM THE CENTERLINE OF TRENCH. OTHER TRENCHES LESS THAN 5 FEET FROM CURB OR WITHIN A STREET THAT WAS LAST PAVED GREATER THAN 60 MONTHS OR SEALED GREATER THAN 36 MONTHS SHALL BE REPAIRED PER THE CITY STANDARD 106-0.

SOUTH MESA WATER COMPANY

TRENCH REPAIR DETAIL

	APPROVED	REVISION	DATE	W-16
	GENERAL MANAGER			
	BOARD MEMBER			
	DATE			SHEET 2 OF 3

GENERAL NOTES:


11. IF TRENCH FAILURE SHOULD OCCUR, THE PERMITEE/DEVELOPER WILL BE NOTIFIED OF SUCH DEFICIENCIES AND ALLOWED TO REMOVE, REPLACE, OR REMEDY HIS WORK. UPON FAILURE OF THE CONTRACTOR TO PROMPTLY COMPLY AND UNDER ORDER OF THE CITY ENGINEER, TRENCH FAILURES SHALL BE REMEDIATED, REMOVED, REPLACED BY THE CITY AT PERMITTEE/DEVELOPER SOLE EXPENSE.

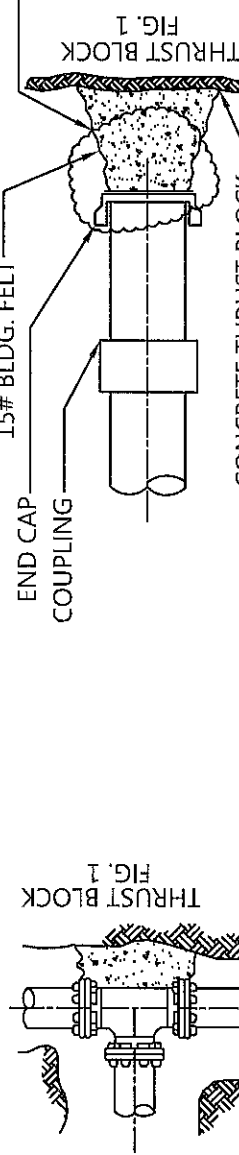
 12. THE ENTIRE 1/2 STREET SECTION TO THE CENTERLINE OF THE PAVED STREET (12 FT. MIN.) SHALL BE OVERLAYED WITH .10" MIN. D2-AR-4000 A.C. OR EQUAL, USING SELF PROPELLED PAVE MACHINE BARBER GREENE, BLAU KNOX OR EQUAL, OR SEALED WITH A TYPE 11 SLURRY SEAL FOR ALL LONGITUDINAL TRENCHES WITHIN ANY STREET PAVED IN THE PREVIOUS 60 MONTHS OR RESURFACED WITH AN ASPHALTIC EMULSION (SLURRY CAPE SEAL) IN THE PREVIOUS 36 MONTHS, RESPECTIVELY. AT THE LIMITS OF PAVING, APPROPRIATE HEADER CUTS (3' TO 5' MINIMUM WIDTH) SHALL BE USED.

 13. THE CITY MAY HAVE ADDITIONAL REQUIREMENTS, PLACED ON THE PERMIT, FOR EXCAVATIONS WITHIN SPECIFIC STREET R/W'S. SEE GENERAL NOTE 13 ON SHEET 3 OF 3 ATTACHED HERETO AND MADE A PART HEREOF.
- NOTE 13: ADDITIONAL REQUIREMENTS:
- SUBJECT TO THE PROVISIONS OF SECTION 4.5, ALL UTILITY TRENCH BACKFILL IN ZONES 1 AND 2 SHALL BE "1-1/2 TO 2 SACK SLURRY CONCRETE" FOR THE CITY'S "REFERENCED STREETS", BEING THOSE STREETS SPECIFICALLY DESIGNATED AS MAJOR ARTERIAL OR SECONDARY HIGHWAYS UNLESS OTHERWISE APPROVED BY THE CITY ENGINEER. NO SLURRY CONCRETE MIX, HOWEVER, SHALL BE REQUIRED WITHIN TWELVE INCHES (12") OF ANY CONNECTION FITTINGS. IN ADDITION, NO WORK SHALL BEGIN BEFORE 7:30 AM OR AFTER 2:30 PM AFFECTING THE TRAFFIC LANES FOR THE REFERENCED STREETS UNLESS APPROVED BY THE CITY ENGINEER.

SOUTH MESA WATER COMPANY

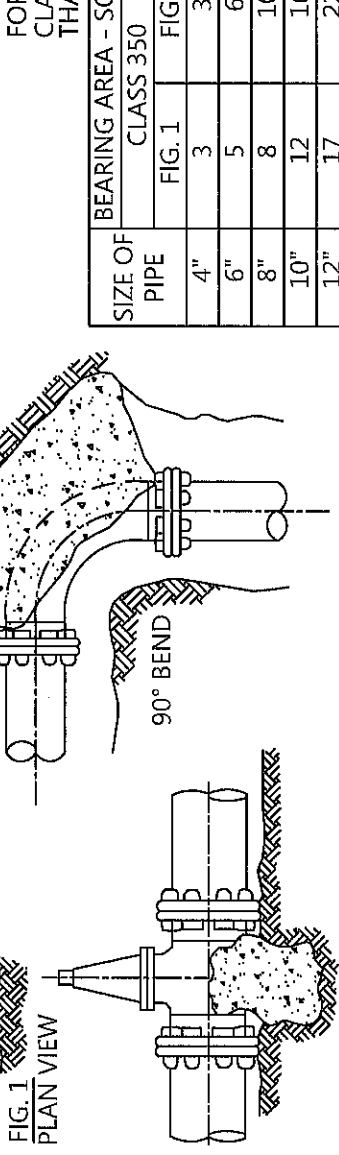
TRENCH REPAIR DETAIL

	APPROVED	REVISION	DATE	W-16
	GENERAL MANAGER			
	BOARD MEMBER			
	DATE			SHEET 3 OF 3



NOTE:
USE PLASTIC WRAP
AROUND ALL FITTINGS
AND COUPLINGS TO
KEEP CEMENT OFF OF
CONNECTIONS
(TYPICAL)

15# BLDG. FELT
END CAP
COUPLING
CONCRETE THRUST BLOCK
SIDE OF TRENCH -
PLUG ASSEMBLY DETAIL



NOTE:
SPECIAL DESIGN REQUIRED
FOR BEARING AREAS FOR
CLASS OF PIPE HIGHER
THAN 150

SIZE OF PIPE	BEARING AREA - SQ. FT.	VOL. - CUBIC FEET
4"	3	CLASS 350
6"	5	FIG. 2
8"	8	FIG. 3
10"	12	FIG. 3
12"	17	FIG. 3
>12"	22	FIG. 3

AS DIRECTED BY
ENGINEER

TO BE CALC'D BY
REG'D ENGINEER

2-1/2" DIAMETER RODS OR
STRAPS WITH 2 NUT ON
EACH END

1/8 45° TYP.
1/16 22-1/2° TYP.
1/32 11-1/4° TYP.

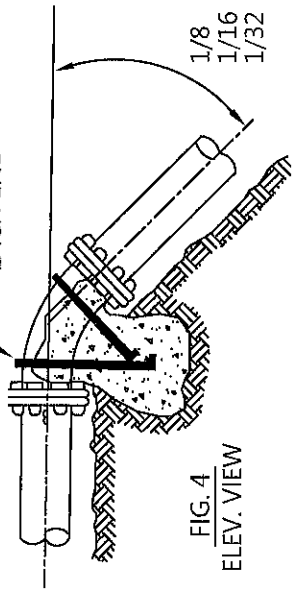


FIG. 4
ELEV. VIEW

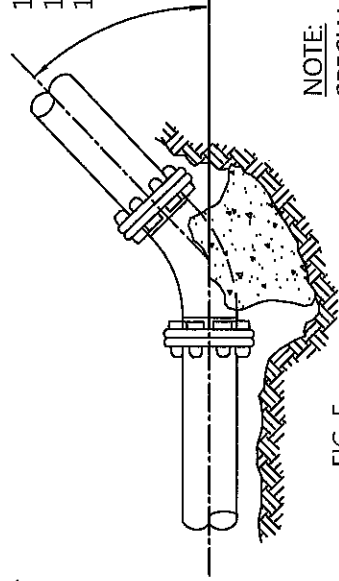


FIG. 5
ELEV. VIEW

NOTE:
SPECIAL DESIGN REQUIRED
FOR BEARING AREAS FOR
CLASS OF PIPE HIGHER
THAN 150

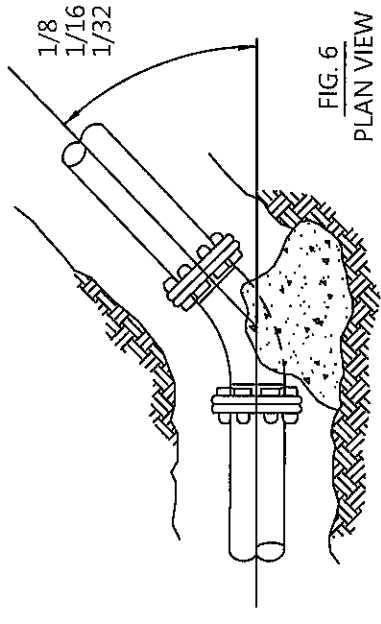


FIG. 6
PLAN VIEW

SIZE OF PIPE	VOLUME - CUBIC FT.		BEARING AREA - SQUARE FT.	
	CLASS 150	CLASS 150	CLASS 150	CLASS 150
4"	8	3	2	1
6"	22	5	4	2
8"		14	3	1
10"		29	3	1
12"		6	13	7
>12"			3	13

TO BE CALCULATED BY REGISTERED ENGINEER

SOUTH MESA WATER COMPANY

THRUST BLOCK DETAIL



APPROVED

GENERAL MANAGER

BOARD MEMBER

REVISION

DATE

DATE

DATE

W-17

SHEET 1 OF 1